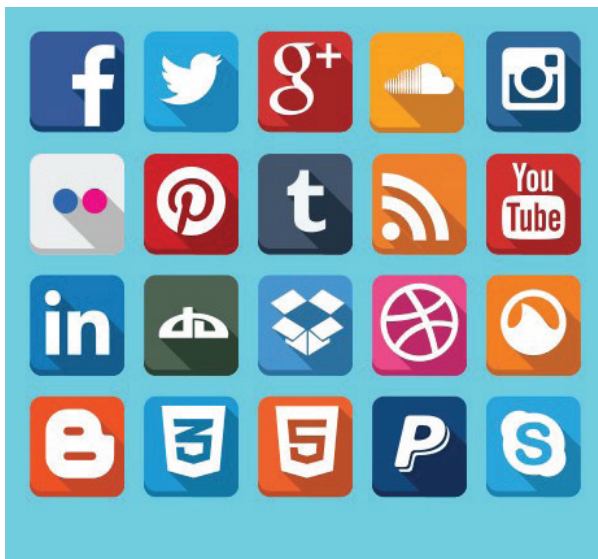


SBE NEWS ALERT

New Social Media Marketing Tool Gives SMBs Ownership Over Social Media Engagement

Moment.me Adds Location-Based Live Social Stream Giving Places of Business Incomparable Social Marketing and Commerce Tools



Moment.me, the leading provider of social media solutions for SMBs, today announced the launch of 'Places,' providing any place of business with location-based live social streaming. Business owners can simply input an address or the name of their establishment and Moment.me will aggregate all the content that has been posted from or about the place into an embeddable feed. With Places, any business can quickly and easily join the social media conversation going on at their 'place of business,' leveraging social media marketing and commerce tools to drive business goals.

"Location-based marketing is the next step in digital marketing, and Places makes that kind of targeted engagement available to SMBs," said Ronny Elkayam, CEO and Co-Founder. "Moment.me has continually developed solutions that organize social media so that it's more enjoyable for individuals and more effective for brands, and this new service is part of that vision."

Places provides a live social media feed which collects all the content posted from any given location, allowing business owners to keep track

of the social media surrounding their business, as well as use that content to drive consumer engagement. Places is constantly aggregating the content that's posted from a specific location, making it the perfect solution for restaurants and bars, hotels and attractions, or even stores where there is a constant stream of social media content being posted and shared.

This live feed is available to businesses already integrated into a Moment.me mobile microsite, which also provide customizable tabs to add useful information about the venue or mcommerce deals. It will also be available as an embeddable link that can be plugged into any other existing website, or as a tab on a company Facebook page, giving businesses

every opportunity to integrate live social media content into their marketing channels.

"We all recognize the enormous power that social media holds today, but brands and businesses need a way to leverage that power to further their business goals," said Eilon Tirosh Chairman and Co-Founder of Moment.me. "Places allows them to do just that, so that small businesses or big brands can utilize the content being created by their own customers to build a community of loyal and engaged customers."

Businesses will also be able to access a list of which customers have been posting about them on social media, including analytics on which customers have the most reach and social media clout. Moving forward, Moment.me plans to add critical outreach tools so that business owners will be able to reach out to key influencers from their social media community directly. Places users will be able to offer these key influencers incentives to share experiences with friends and followers from their networks, to help drive engagement and optimize lead-generation.

About Moment.me

Moment.me provides a comprehensive social media solution for any business, large or small, allowing them to easily monitor and participate in the social media conversation surrounding their business. Using smart aggregation technology, their platform is able to pull together all the social media content posted from or about a particular location or event. This creates a 360 degree picture for consumers to enjoy, and a valuable resource for businesses to use

Continued on page 4



SBE OUTREACH SERVICES

With 1.5 million businesses in our database, SBE is California's #1 source for diversity outreach.

Advertisements

Placed in the Small Business Exchange newspaper, SBE Today newsletter, and online at www.sbeinc.com

Faxed and Eblast Solicitations

Targeted mailings sent to businesses per your criteria.

Telemarketing

Telephone follow-up calls that follow a script of 5 questions you create.

Computer Generated Reports

Will fit right into your proposal, along with a list of interested firms to contact.

Contact Info:

703 Market Street, Suite 1000

San Francisco, CA 94103

Email: sbe@sbeinc.com

Website: www.sbeinc.com

Phone: (415) 778-6250, (800) 800-8534

Fax: (415) 778-6255

Publisher of
Small Business Exchange
weekly newspaper

California Sub-Bid Request Ads

SUB-BID REQUEST

D'Arcy & Harty Construction, Inc
 (415) 822-5200 ph • (415) 822-0747 Fx
 Estimator: willietobin@sbcglobal.net
Rodeo Sanitary District Sewer Year 1 Improvements
Bids: 10/27/14 at 2:00 pm
 UDBe sub-bids requested for
Traffic Control, Saw-cutting, Trucking and Concrete sidewalk

American Asphalt Repair and Resurfacing Co., Inc. is requesting quotes from certified LBE, MBE, WBE & OBE subcontractors and suppliers for Striping, Traffic Control, Trucking, and Material Suppliers that applies to Asphalt, Concrete, and Type 2 & 3 Micro-Surfacing for the following project:

Various Locations Pavement Preservation FY 2014-2015 No. 2; Contract No. 2473J (ID No. FCE15021)
Bid Date: 11/5/14 • Bid Time: 2:30 PM

Quotes can be faxed to Kim Henschel at (510) 723-0288 or emailed at kim@americanasphalt.com

Please send in your bid no later than 11:00 AM on or before the bid date

Plans, specs and requirements can be viewed at our office at 24200 Clawiter Road, Hayward, CA 94545, download from the Department of Public Works (DPW) Electronic Bid Documents site at www.sfdpw.org/biddocs, or purchase a CD format from 1155 Market Street, 4th Floor, San Francisco, CA 94103 for a non-refundable \$15.00 fee. Please contact us for assistance obtaining bonds, line of credit and/or insurance for this project.

REQUEST FOR DBE SUBCONTRACTORS AND SUPPLIERS FOR:

Hwy 20 Lake County
Caltrans #01-488604

BID DATE: October 22, 2014 @ 2:00 PM

We are soliciting quotes for (including but not limited to): Trucking, Lead Compliance Plan, Construction Area Signs, Traffic Control System, Portable Changeable Message Sign, SWPPP, Rain Event Action Plan, Storm Water Sampling & Analysis, Sweeping, Treated Wood Waste, Abandon Culvert, Cold Plane AC, Sand Backfill, Clearing & Grubbing, Rock Blanket, Weed Control Mat, Gravel Mulch, Boulders, Erosion Control, Compost, Lime Stabilized Soil, Geosynthetic Pavement Interlayer, AC Dike, Tack Coat, Minor Concrete, Joint Seal, Roadside Signs, Oxidizing Stain, Anti-Graffiti Coating, Underground, Geocomposite Drain, Redwood Cover, Detectable Warning Surface, Pre/Post Construction Surveys, Misc. Iron & Steel, Fencing, Delineator, Object Marker, Striping & Marking, Electrical, Shoulder Backing, Dust Palliative, Jointed Plain Concrete Pavement, Slope Paving - Concrete and Construction Materials

O.C. Jones & Sons, Inc.

1520 Fourth Street • Berkeley, CA 94710 • Phone: 510-526-3424 • FAX: 510-526-0990

Contact: Jean Sicard

An Equal Opportunity Employer

100% Performance & Payment Bonds may be required. Worker's Compensation Waiver of Subrogation required. Please call OCJ for assistance with bonding, insurance, necessary equipment, material and/or supplies. OCJ is willing to breakout any portion of work to encourage DBE Participation. Plans & Specs are available for viewing at our office or through the Caltrans Website at www.dot.ca.gov/hq/esc/oe/weekly_ads/index.php.

REQUEST FOR LBE SUBCONTRACTORS AND SUPPLIERS FOR:

North Natomas Regional Park Phase 5B Rebid
(Farmer's Market and Parking)
(L19140200-2)

City of Sacramento

BID DATE: October 29, 2014, 2014 @ 2:00 PM

We are soliciting quotes for (including but not limited to): Trucking, Temporary Construction Fence, Erosion and Sediment Control, Construction Staking, Underground, Sanitary Sewer Pipe and Cleanout, Concrete, Signage, Painted Striping & Marking, Farmer's Market Shade Structures, Domestic Water Line, Planting & Irrigation, Electrical and Construction Materials

O.C. Jones & Sons, Inc.

1520 Fourth Street • Berkeley, CA 94710 • Phone: 510-526-3424 • FAX: 510-526-0990

Contact: Mike Crowley

An Equal Opportunity Employer

100% Performance & Payment Bonds may be required. Worker's Compensation Waiver of Subrogation required. Please call OCJ for assistance with bonding, insurance, necessary equipment, material and/or supplies. OCJ is willing to breakout any portion of work to encourage LBE participation. Plans & Specs are available for viewing at our office.

RE-BID Replacement of Embarcadero Bridge Over Lake Merritt Channel
City/Location: Oakland
County: Alameda
Owner: City of Oakland
Bid Date: Thursday 11/6/2014 at 2:00 PM

Brosamer & Wall, Inc. is requesting quotes from all qualified Subcontractors and Suppliers including certified DBE firms for the following items of work, including but not limited to:

Water pollution control, Swppp plan, Small business utilization reporting, Construction survey, Temporary erosion control, Construction area signs, Traffic control, Set up remove detours, Temp chain link fence, Cold plane asphalt pavement, Clearing & grubbing, Imported borrow (light weight fill), Roadway excavation, Class 2 AB, Hot mix asphalt, Cast in place retaining walls, Furnish piling (Class 200), Cast in drilled hole piling 120", Prestressing cip concrete, Furnish/erect precast prestressed concrete slab (Type SII), Joint seal, Polyester concrete overlay, Anti-graffiti coating, Rebar, Roadside signs, Remove existing underground drainage, Reinforced concrete pipe, Underground drainage, Adjust existing utilities, Rock slope protection, Bridge removal, Remove existing flatwork, Flatwork (c&g, sw, drv way, etc), Misc metal & bridge deck drainage system, Bike railing, Striping & marking, Electrical, Landscape & irrigation, Restroom building, Furnish ready mix, Trucking hourly, Temporary construction trestle, Cofferdams, Dewatering, Concrete supplies, Concrete Pumping and Structural Concrete Cast In Place.

Brosamer & Wall, Inc. will work with interested subcontractors to identify opportunities to break down items into economically feasible packages.

Brosamer & Wall, Inc. is a union signatory contractor. Subcontractors must possess a current contractor's license, insurance coverage and worker's compensation for the entire length of the contract. All subcontractors will be required to sign our standard Subcontract Agreement. 100% payment and performance bonds may be required. If you have any questions regarding this project or need assistance in obtaining insurance, bonding, equipment, materials and/or supplies please call Robert Rosas at (925) 932-7900. Plans and specifications can be viewed at our office located at 1777 Oakland Blvd Suite 110, Walnut Creek, Ca. 94596. Brosamer & Wall, intends to work cooperatively with all qualified firms seeking work on this project. We are an equal opportunity employer and will work with any interested subcontractor to identify opportunities to break items into economically feasible packages.

Note: This job has an Owner Controlled Insurance Program (OCIP) Component.

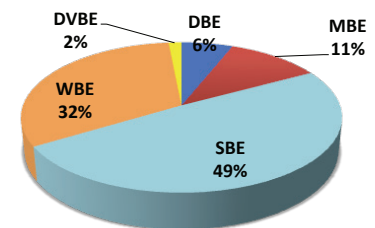
Brosamer & Wall, Inc.

1777 Oakland Blvd Suite 110 • Walnut Creek, CA 94596

Phone: 925-932-7900 • Fax: 925-279-2269

An Equal Opportunity Employer

AUDIENCE PROFILE Small Business Exchange, Inc.



California Sub-Bid Request Ads

Sub Bids Requested From Qualified
DBE and SBE Subcontractors & Suppliers for

**AC Transit - Streets and Parking Lots
Improvement Project**

Contract No. 2015-1306

Location: Oakland, CA

Bid Date: October 28, 2014 @ 2:00 PM

McGuire and Hester is seeking qualified subcontractors in the following trades: Electrical; Striping/Signs; Earthwork; Asphalt Paving; SWPPP; Underground Utilities; Site Demolition; Fencing; Mulch; and Trucking.

We will pay up to and including one and one-half percent (1-1/2%) of your bonding cost. Certification assistance is available, as well as viewing plans and specs.

McGuire and Hester

9009 Railroad Avenue • Oakland, CA 94603

Phone: (510) 632-7676 • Fax: (510) 562-5209

Contact: Randy Somerday

An Equal Opportunity Employer

Sub-Bids Requested From Qualified DBE
Subcontractors & Suppliers

**For Construction on State Highway In
Los Angeles County In La Canada
Flintridge, Glendale and Pasadena From
Dunsmore Avenue Undercrossing to
North Los Robles Avenue Overcrossing
District 07**

Location: 07-LA-210—R16.1/R25.8

Contract No. 07-2881U4 - Addendum No. 4

Bid Date: October 16, 2014 @ 2:00 PM

We have information about the plans, specifications, and requirements in our office located at 14425 Joanbridge Street, Baldwin Park, CA. Please call to arrange an appointment, our office hours are 8:00 am to 4:30 pm. Copying services are available.

Chumo Construction, Inc.

14425 Joanbridge Street, Baldwin Park, CA 91706 •

Phone: (626) 960-9502 Fax: (626) 960-3887

Contact: George Chumo

100% Performance and Payment Bonds with a surety company subject to approval of Chumo Construction Company, Inc. are required of subcontractors for this project. Chumo Construction will pay bond premium up to 1.5%. Subcontractors will be required to abide by terms and conditions of the AGC Master Labor Agreements and to execute an agreement utilizing the latest AGC Standard Long Form Subcontract incorporating prime contract terms and conditions, including payment provisions. Chumo Construction's listing of a Subcontractor is not to be construed as an acceptance of all of the Subcontractor's conditions or exceptions included with the Subcontractor's price quote. Chumo Construction requires that Subcontractors and Suppliers price quotes be provided at a reasonable time prior to the bid deadline to enable complete evaluation. For assistance with bonding, insurance or lines of credit contact George Chumo at (626) 960-9502.

An Equal Opportunity Employer

WEST BAY BUILDERS INC. is requesting bids from DVBE subcontractors, suppliers & truckers for the following project.

James Lick Middle School Modernization SFUSD Project No. 11508

1220 Noe Street, San Francisco, CA

Owner: San Francisco Unified School District

Bid Date: 10/28/14 @ 2:00 PM • Estimate: \$14,000,000 • 3% DVBE Goal

Scope: School modernization which includes but is not limited to: Construction of two elevators; replacement of toilet rooms; renovation of classrooms, offices and other interior spaces; partial replacement of windows, doors, plumbing, mechanical, electrical, lighting, fire alarm, new fire sprinklers, structural shear walls and foundation work; exterior improvements to play yard, ramps, stairs, metal work, some exterior painting and repair, fencing, roof equipment and patching; and hazardous materials abatement.

TRADES NEEDED (but not limited to): Site Waste Management Program; Cutting and Patching; Selective Demolition; Unit Paving; Site Clearing; Earthwork; Protection of Site Murals; Storm Drainage; Concrete; Chain link fences and gates; Site Furnishings; Topsoil; Shotcrete; Structural Steel; Metal Deck and fabrications; Pipe and Tube Railings; Column Covers; Rough carpentry; Architectural Cabinets; Plastic Paneling; Waterproofing; Building Insulation; SBS Modified Bituminous Membrane Roofing; Sheet Metal Flashing and Trimming; Through Penetration Firestop Systems; Joint Sealants; Doors and Frames; Windows; Glazing; Non-load bearing steel framing; Portland Cement Plaster; Gypsum Board; Ceramic Tile; Acoustical Panel and Tile Ceilings; Wood Flooring Refinishes; Resilient Wall Base and Accessories; Flooring; Terrazzo; Painting; Vapor Emission Treatment; Visual Display Surfaces; Display Cases; Toilet and Bath Accessories; Louvers and Vents; Signs; Assisted Listening Systems; Metal Lockers; Fire Extinguishers and Cabinets; Library Stack Systems; Stage Curtains and Drapery; Projection Screens and Mounts; Food Service Equipment; Casework; Roller Shades; Fixed Audience Seating; Elevators; Wheelchair Lifts; HVAC Piping Insulation; Fire Sprinkler Systems; Plumbing; Mechanical; Electrical; Clock and Speaker System; Digital Video Surveillance System; Intrusion Alarm System; Card Access and Video Doorbell Systems; HAZMAT

We are signatory to both the Carpenters Collective Bargaining Agreement and the Laborers Collective Bargaining Agreement. Certification of insurance for General Liability and Workers' Compensation are required. A Waiver of Subrogation will also be required with all Subcontract Agreements. Subcontractors' faithful performance and payment bonds in the amount of the subcontract price will be required, unless contract is under \$200,000. Reasonable market rate bond premium will be reimbursed by West Bay Builders, Inc.

WBB is willing to discuss breaking down bid items into economically feasible units for minority participation. Our estimating department is available for assistance with bonding, lines of credit, insurance, equipment, supplies and/or materials. The Small Business Administration (www.sba.gov), the California Dept. of General Services (www.dgs.ca.gov) and U.S. Dept. of Transportation Office of Small and Disadvantaged Business Utilization (www.osdbu.dot.gov) may also be able to offer financial assistance and/or information regarding insurance and bonding. Plans and specs may be viewed at various local Builder's Exchanges, in our office at 250 Bel Marin Keys Blvd., Bldg. A, Novato Monday through Friday from 7:30 AM to 4:30 PM or can be emailed upon request.

WEST BAY BUILDERS, INC. IS AN EQUAL OPPORTUNITY EMPLOYER

Contact: **Dalia Nieto** • (415) 456-8972 • FAX: (415) 459-0665 • EMAIL: dalian@westbaybuilders.com

RGW Construction Inc. is seeking all qualified DBE (Disadvantaged Business Enterprises) for the following project:

**State Highway in Santa Clara County in Cupertino and Los Altos from Tantau Avenue
Overcrossing to Foothill Expressway Undercrossing
Contract No. 04-272044**

Federal Aid Project No. ACNHPI-280-1(140)E

Engineer Estimate: \$5,800,000 - 100 Working Days

Goal: DBE 8%

Bids: October 29th, 2014 @ 2:00 PM

Requesting Sub-quotes for (including but not limited to): Fabric and Oils, Electrical Material, Construction Area Signs, Traffic Control, Cold Plane, Roadway Excavation, Aggregate Base, Asphalt Paving, Grinding, Joint Seal, Reinforcing Steel, Sign Structure, Signs Roadside, Object Marker, MBGR, Concrete Barrier, Thermoplastic and Painted Traffic Stripe & Marking, Signal and Lighting, Message Signs, Lighting & Sign Illumination, Detector, Ramp Metering System, SWPPP Planning, Sweeper, Hazardous Substance Removal, and Trucker.

Scope of Work: Rehabilitate PCC and AC pavements, upgrade guardrails and signs.

RGW is willing to breakout any portion of work to encourage DBE participation. Contact us for a specific item list.

Plans and Specs are available to view and copy at our office or the Caltrans website www.dot.ca.gov/hq/esc/oe/. Tim Ross 925-606-2400 tim.ross@rgwconstruction.com for any questions, including bonding, lines of credit, or insurance or equipment or material suppliers. Subcontractors should be prepared to submit payment and performance bonds equal to 100% of their quotation. For bonding and other assistance, please call.

RGW Construction, Inc.

Contractors License A/B 591940

550 Greenville Road • Livermore, CA 94550 • Phone: 925-606-2400 • Fax: 925-961-1925

An Equal Opportunity Employer

Public Legal Notices

UC IRVINE

ANNOUNCEMENT TO PREQUALIFIED PROPOSERS

UC Irvine (UCI) invites the following prequalified Proposers to submit proposals for the **BSL-3 LABORATORY TRAINING FACILITY (RE-BID), PROJECT NO. 997493:**

DE LA SECURA, INC. DBA DLS BUILDERS,
Orange, CA 92865, (714) 998-3790

LCS CONSTRUCTORS, INC.,
Irvine, CA 92618, (949) 870-4500

MAXIMUM ACCEPTANCE COST: \$443,000

DESCRIPTION: Tenant improvements for a new training facility within the EH&S building will include minor demolition; gypsum board wall construction; installation of new doors and frames; creation of an air-lock entrance to the new laboratory suite; modifications to the HVAC, plumbing, electrical, and fire/life safety systems; and installation of laboratory equipment.

Project completion time: 6 Months

PROJECT DELIVERY: Design Build

PROCEDURES: RFP avail **10/17/14, 4 PM.** Prequalified Proposers receive 2 sets at UCI Design & Construction Svcs, 101 Academy, Ste 200, Irvine, CA 92697. Planrooms: F.W. Dodge (626) 930-8991 and Reed (800) 424-3996.

MANDATORY PRE-PROPOSAL CONFERENCE & SITE VISIT: **10/21/14, 3:00 PM,** UCI Design & Construction Services – Wright Workshop, 101 Academy, Suite 200, Irvine, CA 92697-2450.

PROPOSALS DUE: Technical Proposal, **11/17/14, 4 PM** and Lump Sum Base Price Proposal, **11/18/14, 4 PM** received only at UCI Design & Construction Services, 101 Academy, Suite 200, Irvine, CA 92697, (949) 824-6630.

Required: General Building “B” California Contractors License and 10% bid bond from *admitted surety insurer (as defined in the California Code of Civil Procedure Section 995.120)*. The successful GC and its subs are req’d to follow the nondiscrimination reqs set forth in the RFP and pay prevailing wage rates at the location of the Work.

Every effort will be made to ensure that all persons shall have equal access to contracts and other business opportunities with the University, regardless of: race; color; religion; sex; age; ancestry; national origin; sexual orientation; physical or mental disability; veteran’s status; medical condition; genetic information; marital status; gender identity; pregnancy; service in the uniformed services; or citizenship within the limits imposed by law or University’s policy.

Brenda Duenas, Principal Contract Administrator, (949) 824-9586, blduenas@uci.edu. Bid Board: www.designandconstruction.uci.edu



CITY & COUNTY OF SAN FRANCISCO DEPARTMENT OF PUBLIC WORKS

**Contract No. 2473J
(ID No. FCE15021)**

VARIOUS LOCATIONS PAVEMENT PRESERVATION FY 2014-2015 NO. 2

Sealed bids will be received at 1155 Market Street, 4th Floor, San Francisco, California 94103 until **2:30 p.m. on November 5, 2014**, after which they will be publicly opened and read. Digital files of Bid Documents, Plan Holders Lists, and Addenda may be downloaded at no cost from the Department of Public Works (DPW) Electronic Bid Documents Download site at www.sfdpw.org/biddocs, or purchased on a CD format from 1155 Market Street, 4th Floor, San Francisco, California 94103, telephone 415-554-6229, for a non-refundable \$15.00 fee paid by cash or check to “Department of Public Works”. Please visit the DPW’s Contracts, Bid Opportunities and Payments webpage at www.sfdpw.org for more information. Notices regarding Addenda and other bid changes will be distributed by email to Plan Holders.

The Work is located on various street locations throughout San Francisco and consists of pavement preservation using type 2 and type 3 micro-surfacing, traffic routing, temporary pavement markings, and all associated work. The time allowed for completion is 90 consecutive calendar days. The Engineer’s estimate is approximately \$1,250,000. For more information, contact the Project Manager, Ramon Kong at 415-554-8280.

This Project shall incorporate the required partnering elements for **Partnering Level 1**. Refer to Section 01 31 33 for more details.

Pursuant to San Francisco Administrative Code (SFAC) Section 6.25, “Clean Construction” is required for the performance of all work.

The Specifications include liquidated damages. Contract will be on a Lump Sum Bid Items With Unit Prices basis. Progressive payments will be made.

Bid discounts may be applied as per SFAC Chapter 14B. Subcontracting goal is **12% LBE**. Call James Soncuya at 558-4080 for details. In accordance with SFAC Chapter 14B requirements, all bidders, except

those who meet the exception noted below, shall submit documented good faith efforts with their bids and must achieve 80 out of 100 points to be deemed responsive. Bidders will receive 15 points for attending the pre-bid conference. Refer to CMD Form 2B for more details. Exception: Bidders who demonstrate that their total LBE participation exceeds the above subcontracting goal by 35% will not be required to meet the good faith efforts requirements.

A pre-bid conference will be held on October 22, 2014; 1:00 p.m., at 1680 Mission Street, 4th Floor.

For information on the City’s Surety Bond Program, call Jennifer Elmore at (415) 217-6578.

A corporate surety bond or certified check for ten percent (10%) of the amount bid must accompany each bid. SFAC Sec. 6.22(A) requires all construction greater than \$25,000 to include performance and payment bonds for 100% of the contract award.

Class “A” license required to bid.

In accordance with San Francisco Administrative Code Chapter 6, no bid is accepted and no contract in excess of \$400,000 is awarded by the City and County of San Francisco until such time as the Mayor or the Mayor’s designee approves the contract for award, and the Director of Public Works then issues an order of award. Pursuant to Charter Section 3.105, all contract awards are subject to certification by the Controller as to the availability of funds.

Minimum wage rates for this project must comply with the current General Prevailing Wage as determined by the State Department of Industrial Relations. Minimum wage rates other than applicable to General Prevailing Wage must comply with SFAC Chapter 12P, Minimum Compensation Ordinance.

This Project is subject to the requirements of the San Francisco Local Hiring Policy for Construction (“Policy”) as set forth in Section 6.22(G) of the SFAC. Bidders are hereby advised that the requirements of the Policy will be incorporated as a material term of any contract awarded for the Project. Refer to Section 00 73 30 of the Project Manual for more information.

Right reserved to reject any or all bids and waive any minor irregularities

10/16/14
CNS-2677021#
SMALL BUSINESS EXCHANGE

New Social Media Marketing Tool Gives SMBs Ownership Over Social Media Engagement

Continued from page 1

to engage with their community and increase revenue through promotional offers. Moment.me’s Places solution generates a live, embeddable, feed of all the social media action going on at any location. This feed empowers businesses to maintain and mobilize their social media interaction in real-time. Their Event solution packages that same social media feed in a mobile microsite, adding mcommerce and email marketing functionality to optimize the promotion and impact of specific events. Launched in 2012 and led by veterans of the Israeli startup scene, Ronny Elkayam, Boaz Adato and Eilon Tirosh, Moment.me has received funding from Blumberg Capital and Singtel Innov8.

Moment.me can be found on Facebook:

www.facebook.com/Moment.me and **Twitter: @Moment_me**

Source: http://moment.me/sign_in



**WIN BIDS
ACHIEVE GOALS**

Demonstrate Good Faith Effort

SBE - Your Diversity Outreach Partner

Rebuilding America
SBE partners with prime contractors, minority-, disadvantaged-, woman- and disabled veteran-owned businesses to rebuild our national infrastructure.

Building Capacity Through Growth
Since 1984 SBE has been in the forefront, bringing opportunities to the diverse business community.



Good Faith & Beyond

- One location, 1.5 million businesses
- Expertise with federal regulations ("CUF" commercially useful function; availability)
- Technical resources
- Planroom with estimating tool
- Advertisements and ad placement services
- Targeted mail/fax/email/radio broadcast/social network
- Telephone follow-up
- Computer-generated reports with customization

Acknowledgments include awards from:

- "Champion of Diversity"**
- BACCOA Bay Area Contracts Compliance Officers Association
- "Minority Media Cornerstone Award"**
- US Department of Commerce MBDA Minority Business Development Agency
- "Outstanding Achievement as Vendor"** - City of Los Angeles
- "Minority Advocate"** - NAMCSC



CONTACT US TODAY

A: 703 Market Street, Suite 1000, San Francisco, CA 94103
 P: 415.778.6250 or 800.800.8534 F: 415.778.6255 E: sbe@sbeinc.com W: www.sbeinc.com

SBE is a certified DBE (49 CFR 23), MBE and SBE firm



FOLLOW US:

-  <https://www.facebook.com/sbeinc>
-  <https://twitter.com/SBEinc1984>